

PrimaveraReader Product Overview



PrimaveraReader

Introduction

PrimaveraReader is standalone application that allows you to **open** and **view** project data exported from Oracle Primavera P6 in **.xer** and **.xls** file format. It is designed to deliver the **well-known view** of project information among all parties involved without having an Oracle Primavera P6 license.

Intuitive work environment

Users can **quickly get started** to work because the PrimaveraReader user interface is very **intuitive**.

All project information given in a particular **table** view and the corresponding graphical **Gantt chart** view are based on the assigned **Calendar**. Use one of the default **layouts** or import your custom made layouts (.plf) to group and sort data as you need.

Activity ID	Activity Name	Start	Finish	Resources
Home Construction				
A1010	Project Management	21-Mar-16 A	17-May-16	Site Manager
A1000	Project Start	21-Mar-16 A		
A1020	Project Complete		17-May-16	
Grading				
A1030	Survey and mark out site	21-Mar-16 A	23-Mar-16 A	Land Surveyor
A1040	Grade site	23-Mar-16 A	23-Mar-16 A	Operator
Foundation				
A1050	Install foundation forms	30-Mar-16 A	31-Mar-16	Rough Carpenter, Laborer-Const
A1060	Install slab plumbing	01-Apr-16 A	01-Apr-16	Plumber
A1070	Pour and float slab concrete	04-Apr-16 A	04-Apr-16	Laborer-Construction
Structure				
Framing				
A1080	Erect exterior wall frames	14-Apr-16 A	20-Apr-16	Rough Carpenter
A1090	Erect interior stud walls	22-Apr-16 A	27-Apr-16	Rough Carpenter
A1100	Install OSB exterior cladding	22-Apr-16 A	25-Apr-16	Rough Carpenter
Roof				
A1110	Install trusses	22-Apr-16 A	25-Apr-16	Rough Carpenter
A1120	Install roof sheeting	26-Apr-16 A	26-Apr-16	Rough Carpenter
A1130	Install paper and shingles	27-Apr-16 A	28-Apr-16	Roofing
Interior				
A1200	Door casings and baseboards			
A1260	Lay turf and plant trees			

Activity ID	Activity Name	Relationship Type	Lag	Activity Status	Primary Resource
A1010	Project Management	FF	0	In Progress	SMing.Site Manager
A1150	Install HVAC Unit	FF	0	In Progress	Eng.HVAC Engineer
A1170	Finish wiring	FF	0	In Progress	Elec.Electrician
A1230	Install kitchen cabinets	FF	0	In Progress	FCarp.Finish Carpenter
A1220	Door casings and baseboards	FF	0	In Progress	FCarp.Finish Carpenter
A1260	Lay turf and plant trees	FF	0	In Progress	GenLabor.Laborer-Constructio

Key Features

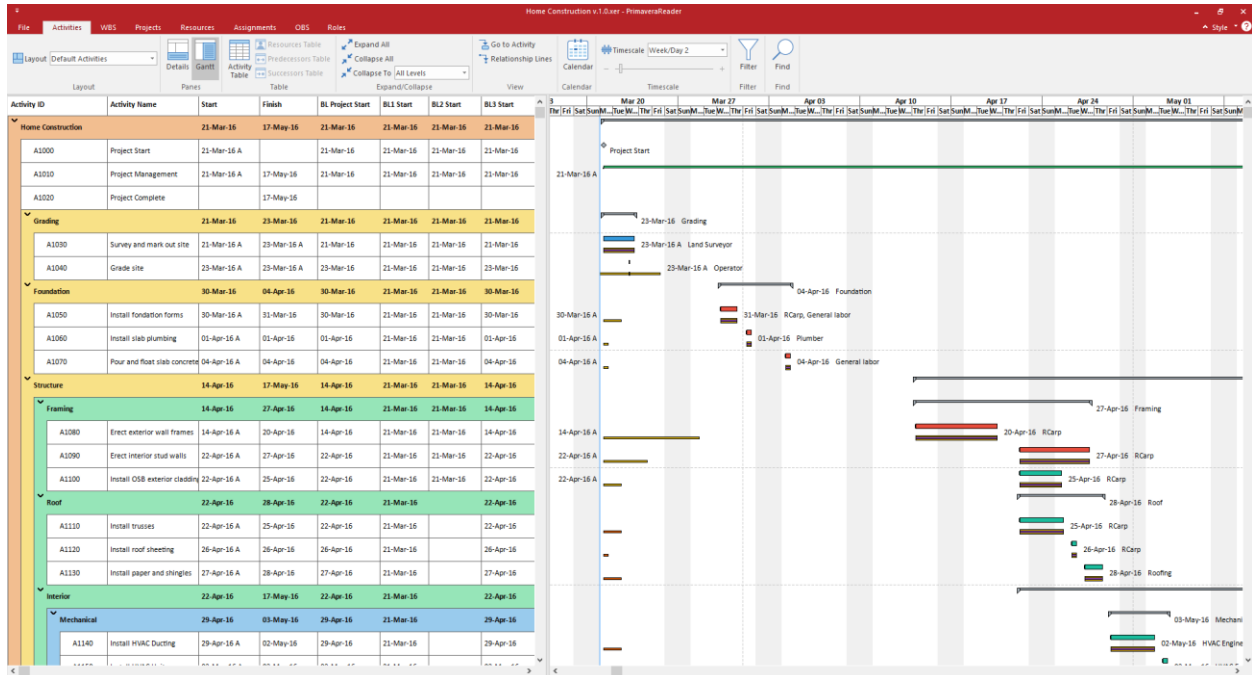
In PrimaveraReader, project participants such as project managers, team members, contractors and subcontractors can **have complete visibility** on project progress by using the native views for:

- **Activities**
- **WBS** - Work Breakdown Structure
- **Projects** - which represents the Enterprise Project Structure (EPS)
- **Resources** view the resource structure and get details
- **Assignments** view resource cost and quantity information in spreadsheet.
- **OBS** – Organizational Breakdown Structure
- **Roles** - view the roles assigned to resources.

- **Details** - view of selected items in current view

Baselines to compare project versions

The baselines functionality enables users to **compare** several updated versions of a project and get graphical presentation of the aspects that have been changed from the original schedule. In PrimaveraReader users can import up to four baselines as shown on the image below:



Learn More

We recommend you visit our page to find more documents and videos about PrimaveraReader www.primaverareader.com. Put hands on the PrimaveraReader by downloading the trial version from www.primaverareader.com/free-primavera-reader-trial.

<http://www.primaverareader.com>
customcenter@primaverareader.com